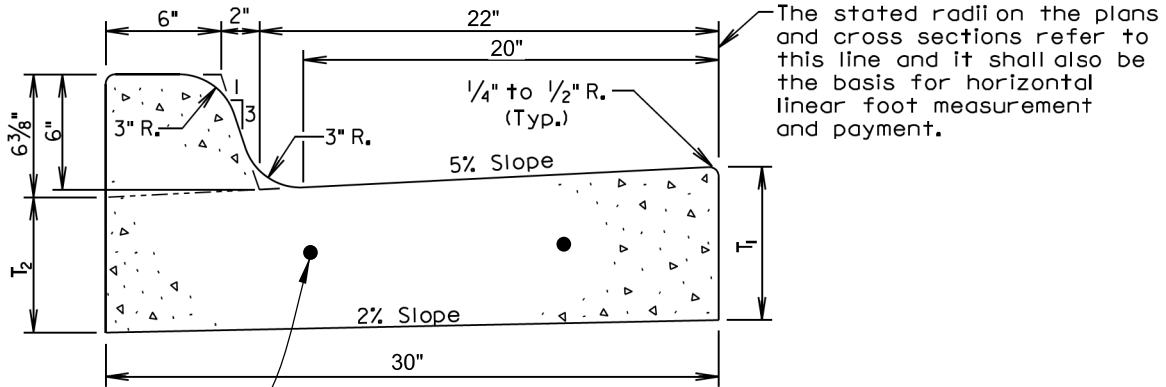




TYPICAL 30" CURB & GUTTER

Type B Modified



TWO #4 REBAR
EVENLY SPACED
12" LAP ON SPLICES

Type	T ₁ (Inches)	T ₂ (Inches)
B66	6	5 ⁵ / ₁₆
B67	7	6 ¹ / ₁₆
B68	8	7 ¹ / ₁₆
B68.5	8.5	7 ⁹ / ₁₆
B69	9	8 ¹ / ₁₆
B69.5	9.5	8 ⁹ / ₁₆
B610	10	9 ¹ / ₁₆
B610.5	10.5	9 ⁹ / ₁₆
B611	11	10 ¹ / ₁₆
B611.5	11.5	10 ⁹ / ₁₆
B612	12	11 ¹ / ₁₆

GENERAL NOTES:

When concrete curb and gutter longitudinally adjoins new concrete pavement, the method of attachment shall be by one of the methods shown on Standard Plate 380.11.

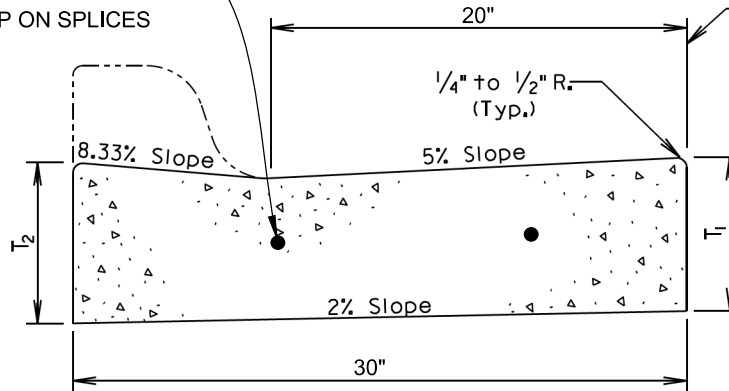
See Standard Plate 650.90 for expansion and contraction joints in the curb and gutter.



TYPICAL 30" DRIVEWAY GUTTER

Type P Modified

TWO #4 REBAR
EVENLY SPACED
12" LAP ON SPLICES

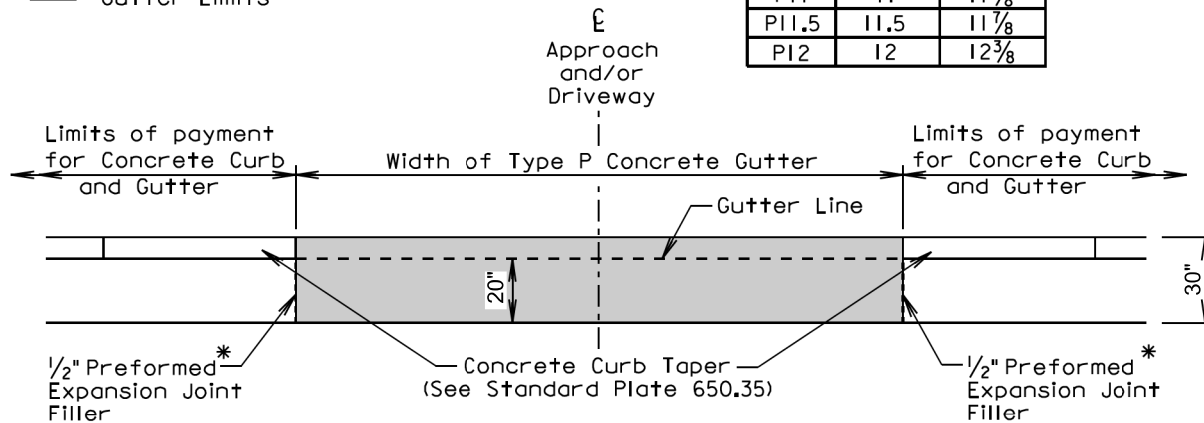


The stated radii on the plans and cross sections refer to this line and it shall also be the basis for horizontal linear foot measurement and payment.

Type	T ₁ (Inches)	T ₂ (Inches)
P6	6	6 ³ / ₈
P7	7	7 ³ / ₈
P8	8	8 ³ / ₈
P8.5	8.5	8 ⁷ / ₈
P9	9	9 ³ / ₈
P9.5	9.5	9 ⁷ / ₈
P10	10	10 ³ / ₈
P10.5	10.5	10 ⁷ / ₈
P11	11	11 ³ / ₈
P11.5	11.5	11 ⁷ / ₈
P12	12	12 ³ / ₈

TRANSVERSE SECTION

■ Type P Concrete
Gutter Limits



PLAN VIEW

* Joint will not be needed if concrete curb & gutter and type P concrete gutter is placed at the same time.

GENERAL NOTES:

The concrete for the Type P Concrete Gutter shall comply with the requirements of the Standard Specifications for Class M6 Concrete.

When concrete gutter longitudinally adjoins new concrete pavement, the method of attachment shall be by one of the methods shown on Standard Plate 380.11.

Transverse contraction joints shall be constructed at 10' intervals in the concrete gutter except when concrete gutter is constructed adjacent to mainline PCC pavement. When concrete gutter is constructed adjacent to mainline PCC pavement, a transverse contraction joint shall be constructed in the concrete gutter at each mainline PCC pavement transverse contraction joint location.

When concrete gutter is placed monolithically with mainline PCC pavement, the transverse contraction joints in the concrete gutter shall be sawed and sealed the same as the transverse contraction joints in the mainline PCC pavement.

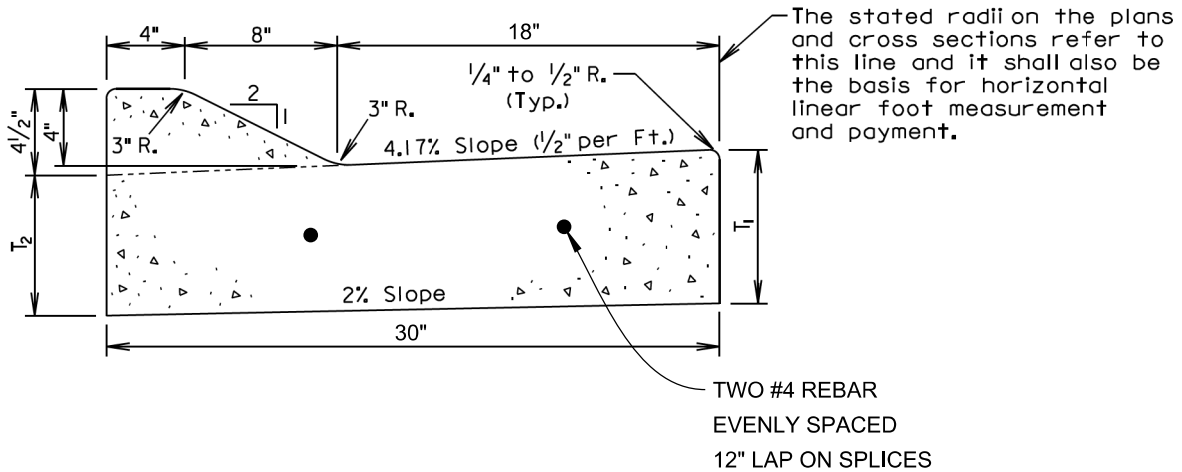
When concrete gutter is not placed monolithically with the mainline PCC pavement and when the adjacent mainline surfacing is not PCC concrete, the transverse contraction joints in the concrete gutter shall be 1/2 inches deep if formed in the fresh concrete using a suitable grooving tool. If a saw is used to cut the contraction joints, then the depth of the joint shall be at least 1/4 the thickness of the concrete.



TYPICAL 30" DRIVEOVER CURB & GUTTER

Type D Modified

(Optional in Cul-De-Sacs Only)



Type	T ₁ (Inches)	T ₂ (Inches)
D46	6	5 ⁵ / ₁₆
D47	7	6 ⁵ / ₁₆
D48	8	7 ⁵ / ₁₆
D48.5	8.5	7 ¹³ / ₁₆
D49	9	8 ⁵ / ₁₆
D49.5	9.5	8 ¹³ / ₁₆
D410	10	9 ⁵ / ₁₆
D410.5	10.5	9 ¹³ / ₁₆
D411	11	10 ⁵ / ₁₆
D411.5	11.5	10 ¹³ / ₁₆
D412	12	11 ⁵ / ₁₆

GENERAL NOTES:

When concrete curb and gutter longitudinally adjoins new concrete pavement, the method of attachment shall be by one of the methods shown on Standard Plate 380.11.

See Standard Plate 650.90 for expansion and contraction joints in the curb and gutter.